



Item No. \_\_\_\_\_

C300FAB

# C300FAB

## Frozen Adult Beverage Freezer

Two Flavor



Standard model with optional Zamboozy™ Merchandising Materials. Consult a Taylor distributor for merchandising options.

### Features

The Zamboozy™ adult slushie freezer takes ordinary craft beers and cocktails, and turns them into the next big thing. The slushies are light and flavorful. The LTOs are limitless. Put it all together and it could make your place the talk of the town. Standard unit is equipped to connect directly to beer kegs. Serve cocktail slushies easily by connecting the optional cocktail kit.

### Freezing Cylinder

Two, 7 quart (6.6 liter).

### Dispensing Door

Clear plastic dispensing doors allow customers to see slush being made. Self closing draw handles are standard.

### Indicator Lights/Audible Alarm

Lights illuminate and audible alarm sounds to indicate loss of CO<sup>2</sup> water, or syrup on the affected side. The opposite side will continue to operate when one side loses syrup. A snooze feature may be activated to silence the alarm for 30 minutes.

### Automatic Defrost

Programmable defrost cycles allow the operator to select the time and frequency for defrosting each freezing cylinder independently. The defrost light flashes to warn customers not to draw product from the side that is being defrosted. At the end of the defrost cycle, the freezing cylinder automatically returns to the freeze-down mode.

### Power Saver

During extended no-use periods, the Power Saver feature may be programmed for either Standby or Rest Mode. Standby Mode maintains product in freezing cylinder between 35 & 40°F (1.6 & 4.4°C) for quickest return to serving product. Rest Mode shuts down the refrigeration system for the most energy savings. Start and end times may be programmed independently for seven cycles.

### Electronic Viscosity Control

Slushtech™ is standard with our exclusive microprocessor based universal control which regulates refrigeration by measuring product viscosity.

### Air Filter

Removable, cleanable air filter helps keep condenser clean for optimal refrigeration system performance.

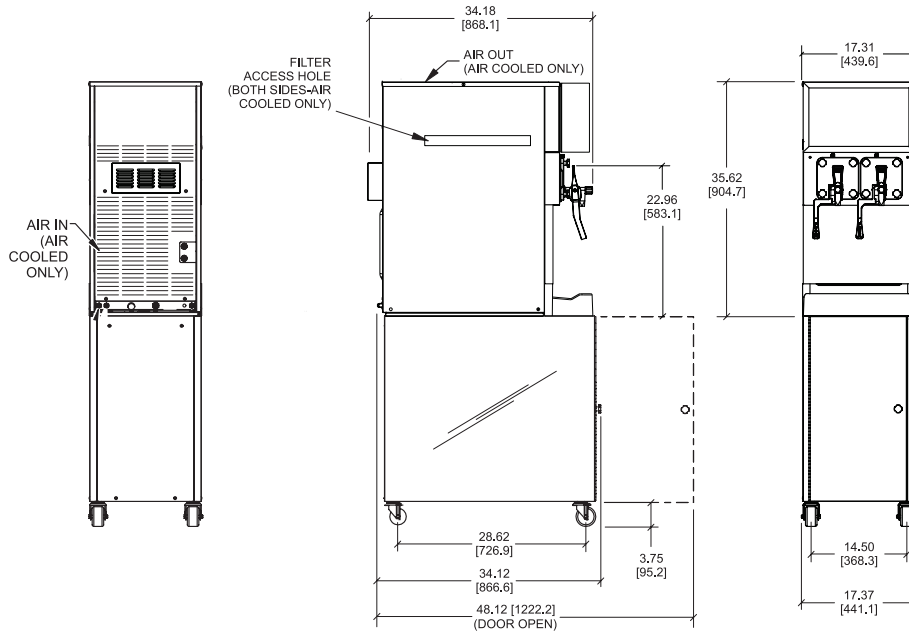
### Merchandising

Standard model's LED display backlights translight and illuminates clear dispensing doors to draw customer attention. This display provides energy efficient, even, consistent lighting.

750 N. Blackhawk Blvd. Rockton, Illinois 61072  
800-255-0626  
Phone 815-624-8333 Fax 815-624-8000  
www.taylor-company.com  
info@taylor-company.com

ISO 9001:2015  
Registered Firm





FIGURES IN BRACKETS INDICATE MILLIMETERS / DECIMAL AND FRACTIONAL DIMENSIONS EQUAL TO ( PLUS OR MINUS 1/16 INCH (1.5mm) / \*WATER COOLED ONLY).

Weights	lbs.	kgs.
Net	335	152.0
Crated	383	173.7
Volume	cu. ft.	cu. m.
	23.9	0.68
Dimensions	in.	mm.
Width	17-5/16	439
Depth	34-3/16	868
Height	35-5/8	905
Counter Clearance	---	---

\*Designed to rest on a plastic pad directly on counter top or optional cart.

Electrical	Maximum Fuse Size	Minimum Circuit Ampacity	Poles (P) Wires (W)
208-230/60/1 Air	30	19	2P 3W
380-415/50/3N Air	9	7	4P 5W

This unit may be manufactured in other electrical characteristics and may have additional regulatory agency approvals. Consult the local Taylor Distributor for other electrical characteristics and agency approvals based on specific electrical and country requirements.

(For exact electrical information and approval marks, always refer to the data label of the unit.)

**Continuing research results in steady improvements; therefore, these specifications are subject to change without notice.**

**Bidding Specs**

Electrical: Volt \_\_\_\_\_ Hz \_\_\_\_\_ ph \_\_\_\_\_  
 Neutral: Yes No      Cooling: Air Water NA

Options: \_\_\_\_\_

**Specifications**

**Electrical**

One dedicated electrical connection is required. See the Electrical chart for the proper electrical requirements. Manufactured to be permanently connected. Consult your local Taylor distributor for cord & receptacle specifications as local codes allow.

**Beater Motor**

One, 1/4 HP.

**Refrigeration System**

One, 18,000 BTU/hr compressor (nominal rating). R404A. (Actual BTUs will vary based on application.)

**Air Cooled**

Minimum Clearance: 3" (76 mm) on one side, 3" (76 mm) at the rear, and 12" (305 mm) on the top of the unit. Minimum air clearances must be met to assure adequate air flow for optimum performance.

**Options**

- Cocktail kit
- Zamboozy™ merchandising kit is under development.
- Cart Model C202

**Cart Dimensions**

Width: 17-3/8" (441 mm)  
 Depth: 33-1/8" (841 mm)  
 Height: 32-1/8" (816 mm)

**Cart Weights**

Net: 180 lbs. (81.6 kg)  
 Crated: 204 lbs. (92.5 kg)

Authorized Taylor Distributor

 **TAYLOR®**  
 750 N. Blackhawk Blvd.  
 Rockton, Illinois 61072  
[www.taylor-company.com](http://www.taylor-company.com)