



Item No. _____

490

Shake/Smoothie Freezer

Single Flavor Extra Thick

490 Ex Thick

Features

Serve a wide variety of frozen beverages, like shakes and smoothies, with the assurance of safe temperatures for dairy products. Direct-draw a single flavor or blend in flavorings for more variety.

Freezing Cylinder

One, 7 quart (6.6 liter).

Mix Hopper

One, 20 quart (18.9 liter). Refrigerated to maintain mix below 41°F (5°C).

Indicator Lights

Add Mix light alerts the operator to add mix. When the Mix Out light flashes, the unit automatically shuts down to prevent damage.



Rockton, Illinois 61072
800-255-0626
Phone 815-624-8333 Fax 815-624-8000
www.taylor-company.com
e-mail: info@taylor-company.com

ISO 9001:2015
Registered Firm



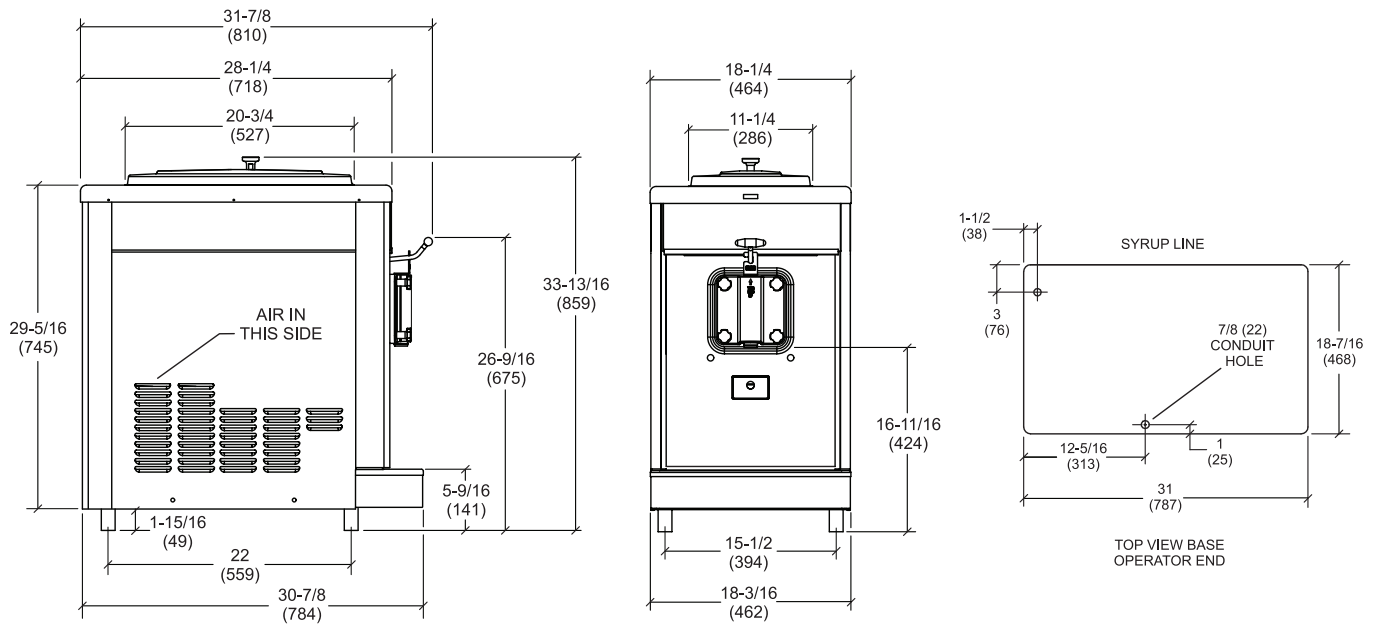
Standard 6



SA2650



Selected 50/60
Hz. Models



Weights	lbs.	kgs.
Net	280	127.1
Crated	317	143.8

*For reference only

	cu. ft.	cu. m.
Volume	14	.39

Dimensions	in.	mm.
Width	18-7/16	468
Depth	31	787
Height	36-3/8	924
Counter Clearance	4-1/4	108

*Mounted on standard legs

Electrical	Maximum Fuse Size	Minimum Circuit Ampacity	Poles (P) Wires (W)
208-230/60/1 Air	15	12	2P 3W
	Data Plate KW*	Estimate amps	Acceptable NEMA Plug
	2.9	16	6-20P

*Data Plate kW is maximum kW based off all major electrical components running under full load amperage conditions at all times. Pending application and use of equipment, power consumption may vary.

This unit may be manufactured with other electrical characteristics and may have additional regulatory agency approvals. Consult the local Taylor distributor for other electrical characteristics and agency approvals based on specific electrical and country requirements.

(For exact electrical information, approval marks, and refrigeration, always refer to the data label of the unit.)

Continuing research results in steady improvements; therefore, these specifications are subject to change without notice.

Bidding Specs

Electrical: Volt _____ Hz _____ ph _____
 Neutral: Yes No Cooling: Air Water NA

Options:

All options may not be available in combination with others or with all electrical or cooling configurations. Please consult your local Taylor distributor.

Authorized Taylor Distributor

Specifications

Electrical

One dedicated electrical connection is required. See the electrical chart for the proper electrical requirements. Manufactured to be permanently connected. For alternative approved field installations, consult your local Taylor distributor for cord and receptacle specifications as local codes allow.

Beater Motor

One, 1.5 hp.

Refrigeration System

One, 7,500 BTU/hr. R449A.
 (BTUs may vary depending on compressor used.)

Air-Cooled

Minimum Clearance: 6" (152 mm) on both sides. It is recommended to place the rear of the unit against the wall to prevent recirculation of warm air. Minimum air clearances must be met to ensure adequate airflow for optimum performance.



750 N. Blackhawk Blvd.
 Rockton, Illinois 61072
www.taylor-company.com